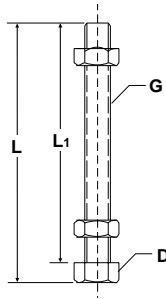
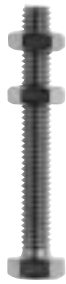


ACCESSORIES – MANUAL CLAMPS

Adjustment Spindle Assemblies

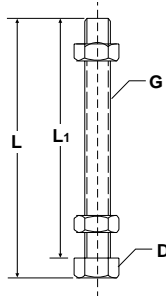


HEX-HEAD - FULLY THREADED ALUMINUM



Part No.	EDP No.	L	L ₁	D	Thread (G)
441203-AL	59341	1.75	1.50	1/2	5/16-18
491203-AL	59342	1.50	1.25	9/16	3/8-16
485203-AL	59344	2.75	2.50	9/16	3/8-16
486203-AL	59345	4.00	3.75	9/16	3/8-16

HEX-HEAD - FULLY THREADED CARBON STEEL



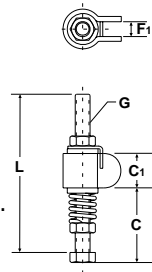
Part No.	EDP No.	L	L ₁	D	Thread (G)
105203	59301	0.84	0.75	1/4	8-32 Nylon
305203	59313	1.09	1.00	5/16	10-32
202203	59303	3.13	3.00	7/16	1/4-20
205203	59302	1.88	1.69	7/16	1/4-20
461203	59314	1.00	0.81	1/2	5/16-18
441203	59312	1.94	1.75	1/2	5/16-18
207203	59304	2.75	2.50	1/2	5/16-18
491203	59315	1.50	1.25	9/16	3/8-16
210203	59305	3.00	2.75	9/16	3/8-16
240203	59307	4.25	4.00	9/16	3/8-16
527203	59316	5.25	5.00	9/16	3/8-16
325203	59317	2.75	2.50	3/4	1/2-13
220203	59306	3.31	3.00	3/4	1/2-13
250203	59308	4.38	4.00	15/16	5/8-11

PRESSURE-MATIC BOLT RETAINER ASSEMBLIES

Part No. 910



Part No. 904



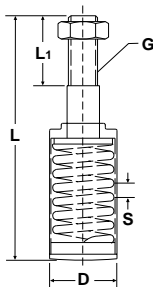
Part No.	EDP No.	L	Range C	C ₁	F ₁	Thread (G)	Max. Comp	Max. Pres.
902	59020	3.20	1.06 - 1.56	0.63	0.25	5/16-18	0.50"	72 lbs.
904	59040	4.25	1.38 - 3.00	0.88	0.38	3/8-16	0.25"	180 lbs.
910	59100	4.42	2.06 - 2.81	1.00	0.38	5/8-11	0.75"	468 lbs.

For use with solid bar hold-down clamps. The compression spring allows the clamp to compensate for variations in material thickness. Clamp capacity is only as great as the maximum spring pressure.

PLUNGER-MATIC ASSEMBLIES



Part No. 905



Part No.	EDP No.	L	L ₁	D	S	Thread (G)	Max. Comp.	Max. Pres.
905	59050	2.50	0.75	0.88	0.19	5/16-18	0.19"	135 lbs.
920	59200	3.63	1.13	0.88	0.38	3/8-16	0.38"	308 lbs.
950	59500	5.25	1.56	1.44	0.50	5/8-11	0.50"	770 lbs.

For use with plunger/straight-line action clamps. The compression spring allows the clamp to compensate for variations in material thickness. Clamp capacity is only as great as the maximum spring pressure.